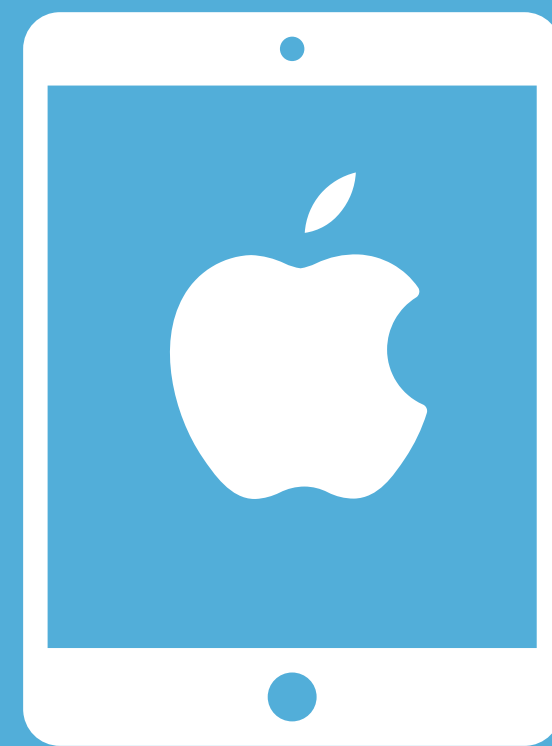


# APPLE DEVICE PROCESS



1. Contact Apple for quote of devices, or get a list of authorised re-sellers.
2. Purchase Mobile Device Management (MDM) subscription
3. Set up your Apple Business Management (ABM) account and your MDM account
4. Link MDM supplier to ABM
5. Confirm purchase of devices via your ABM account
  - a. Purchase Sim cards
6. Once your devices have been purchased, you will need to 'assign' them to your MDM account, either using the Serial/ Purchase Order number
7. Set up profiles and groups on your MDM account
8. When devices arrive, put Sim cards into the devices
9. You'll need to rename the devices on the MDM, they will all be listed as iPad. Consider renaming them to the asset number
10. Switch on the devices, they will automatically update with the details from the profile and group
11. There is a step here to stop people from turning off the location settings, that you can use
12. Clean and distribute